

| **The Right Stuff:** Getting the Up-to-Date Tools, Software and Training



Anti-theft diagnostics and reprogramming require the very best and latest tools, software and training. Nissan makes it easy to ensure your tools software and training are current. Everything you need to get up to speed is available on the Nissan and Infiniti TechInfo websites at <http://www.nissan-techinfo.com> or <http://www.infiniti-techinfo.com>. How simple is that?

SOFTWARE

Updated diagnostic software ensures you have the latest and greatest versions to cover the entire range of Nissan and Infiniti vehicles you service the most.

Diagnostic Software Updates

Consult III

The Consult III supports ECU reprogramming on 2007 and later model year vehicles. If you have a Consult III, you'll want to make sure you have Consult III Diagnostics Software Update (Version 9.11.1.0) installed in the unit. NOTE: Consult III diagnostic software version 8.10 or greater is required when performing reprogramming operations.

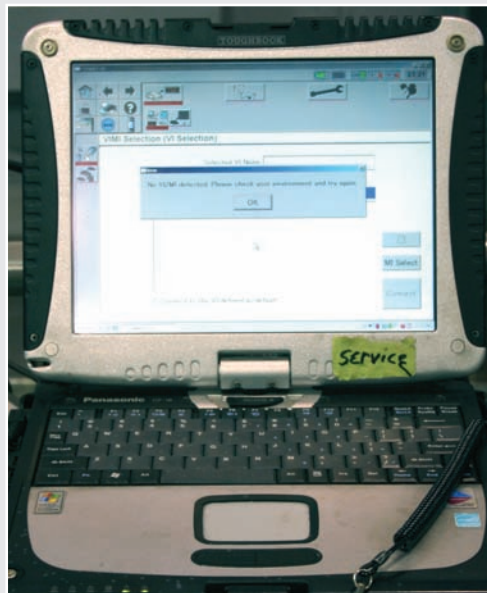
If you have purchased a Consult III, Panasonic Toughbook model CF-19MK2 recently, you may need to download and install a Bluetooth software update (Version 4.0.0.37). This is a no cost update.

You can also download the newest CONSULT III Operations Manual (Version 1.00.28) at no cost

Consult II

For Consult II owners, it's best to have the Consult II Diagnostics Software Update (Version UED06E) downloaded into the tool. The Consult II supports ECU reprogramming on 2006 and earlier model year vehicles.

At the TechInfo sites, you can download Consult II Reprogramming card software. To guarantee that you have the latest reprogramming software, check the version you have or download the latest programming software - Consult II Program (Version AER05A) at no cost.



The Consult III is the latest system for diagnosing and reprogramming 2007 and later vehicles.



The Consult II unit can be used on 2006 and earlier models.



The Consult II allows you to register keys up to 2005 model year.

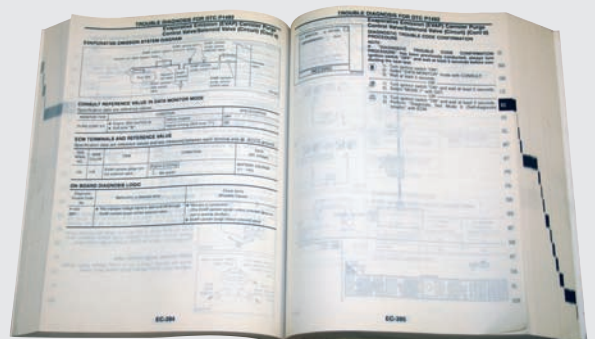
TECH-MATE SPECIAL SERVICE TOOLS

The importance of having the proper tools to do the job correctly cannot be overemphasized. When diagnosing or reprogramming a Nissan or Infiniti vehicle, you should always use the Consult II and Consult III tools and accessories. Anything less compromises the integrity of the vehicles' systems and may produce less than accurate results.

You can easily order these diagnostic tools from Nissan Tech-Mate Special Service Tools at <http://www.nissantechmate.com>, or call 1-800-662-2001.

SERVICE MANUALS

You can conveniently purchase factory authorized Nissan Service Manuals for 1989



Printed Nissan and Infiniti Service Manuals can be invaluable for servicing vehicles when internet service is not available or a Consult II or III system is not an option.

model year Nissan (1990 Infiniti) and newer vehicles. These manuals provide detailed service and repair information for Nissan and Infiniti vehicles.

Completely up to date, and full of easy to follow diagrams and procedures, these manuals are the same ones used by the technicians at Nissan and Infiniti dealerships. Your order will be processed and shipped within 24 hours!

Nissan and Infiniti Owner's Manuals can also be viewed online in .pdf document format for model years 1996 and newer vehicles. Printed versions of the Owner's Manuals are not available from the websites.

Training

Training in the use of Consult II and III tools also available on the TechInfo websites. One option is the Student/Instructor Packages for Classroom Training Classroom Materials. These materials are available as download only. Courses include: Consult III Functions, Consult II Diagnosis, Consult II Simple Oscilloscope and 2007 Altima/Consult III New Technology.

There are also great e-Learning Courses, available for download and viewing. These include: Consult II Functions and Introduction to Consult III. |